



# 700 SERIES MODEL 7260 CRAWLER CRANE with 59S Boom

## LIFT RATINGS with 59S Tubular Chord Hammerhead Boom and "S-S" Counterweight (49,900 lbs.) (22635 kgs.)

### METRIC

Boom Length Feet	Radius In Feet	Boom Angle Degrees	Ratings In Pounds	Feet From Boom Point To Ground	Boom Length Meters	Radius in Meters	Boom Angle Degrees	Ratings in Kilograms	Meters From Boom Point To Ground
40 feet	11	82.8	200000	46	12.2 meters	3.4	82.8	90720	14.0
	12	81.3	200000	46		3.7	81.3	90720	14.0
	15	77.0	175350	45		4.6	77.0	79540	13.7
	20	69.6	106600	44		6.1	69.6	48350	13.4
	25	61.7	76120	41		7.6	61.7	34530	12.5
	30	53.1	58840	38		9.1	53.1	26690	11.6
	35	43.3	47770	33		10.7	43.3	21670	10.1
40	30.9	40000	26	12.2	30.9	18140	7.9		
50 feet	13	81.9	198730	56	15.2 meters	4.0	81.9	90140	17.1
	15	79.6	175470	55		4.6	79.6	79590	16.8
	20	73.8	106620	54		6.1	73.8	48360	16.3
	25	67.7	76130	52		7.6	67.7	34530	15.8
	30	61.3	58810	50		9.1	61.3	26680	15.2
	35	54.5	47750	47		10.7	54.5	21660	14.3
	40	47.0	39980	42		12.2	47.0	18130	12.8
50	27.4	29860	29	15.2	27.4	13540	8.8		
60 feet	14	82.3	187000	66	18.3 meters	4.3	82.3	84820	20.1
	15	81.3	175510	65		4.6	81.3	79610	19.8
	20	76.5	106590	64		6.1	76.5	48350	19.5
	25	71.6	76110	63		7.6	71.6	34520	19.2
	30	66.5	58770	61		9.1	66.5	26660	18.6
	35	61.1	47720	59		10.7	61.1	21650	18.0
	40	55.5	39950	55		12.2	55.5	18120	16.8
	50	42.6	29810	46		15.2	42.6	13520	14.0
60	24.8	23550	31	18.3	24.8	10680	9.4		
70 feet	15	82.6	175470	75	21.3 meters	4.6	82.6	79690	22.9
	20	78.5	106500	75		6.1	78.5	48310	22.9
	25	74.3	76010	73		7.6	74.3	34480	22.3
	30	70.0	58650	72		9.1	70.0	26600	21.9
	35	65.6	47600	70		10.7	65.6	21590	21.3
	40	61.0	39820	67		12.2	61.0	18060	20.4
	50	51.0	29680	60		15.2	51.0	13460	18.3
	60	39.3	23440	50		18.3	39.3	10630	15.2
70	22.9	19100	33	21.3	22.9	8660	10.1		
80 feet	16	82.8	155390	85	24.4 meters	4.9	82.8	70480	25.9
	20	79.9	106400	85		6.1	79.9	48260	25.9
	25	76.3	75920	84		7.6	76.3	34440	25.6
	30	72.6	58540	82		9.1	72.6	26550	25.0
	35	68.8	47490	81		10.7	68.8	21540	24.7
	40	64.9	39710	78		12.2	64.9	18010	23.8
	50	56.6	29560	73		15.2	56.6	13410	22.3
	60	47.5	23350	65		18.3	47.5	10580	19.8
	70	36.6	19020	53		21.3	36.6	8630	16.2
80	21.3	15870	35	24.4	21.3	7200	10.7		
90 feet	17	83.0	139410	95	27.4 meters	5.2	83.0	63240	29.0
	20	81.0	106280	95		6.1	81.0	48210	29.0
	25	77.8	75780	94		7.6	77.8	34370	28.7
	30	74.5	58380	93		9.1	74.5	26480	28.3
	35	71.2	47340	91		10.7	71.2	21470	27.7
	40	67.8	39550	89		12.2	67.8	17940	27.1
	50	60.7	29390	85		15.2	60.7	13330	25.9
	60	53.1	23200	78		18.3	53.1	10520	23.8
	70	44.6	18870	69		21.3	44.6	8560	21.0
80	34.4	15720	57	24.4	34.4	7130	17.4		
90	20.0	13330	36	27.4	20.0	6050	11.0		
100 feet	19	82.5	115390	105	30.5 meters	5.8	82.5	52340	32.0
	20	81.9	106150	105		6.1	81.9	48150	32.0
	25	79.0	75650	104		7.6	79.0	34310	31.7
	30	76.1	58230	103		9.1	76.1	26410	31.4
	35	73.2	47210	102		10.7	73.2	21410	31.1

(Continued)

**LIFT RATINGS (cont.)**

with 59S Tubular Chord Hammerhead Boom

**METRIC**

Boom Length Feet	Radius In Feet	Boom Angle Degrees	Rating In Pounds	Feet From Boom Point To Ground	Boom Length Meters	Radius In Meters	Boom Angle Degrees	Rating In Kilograms	Meters From Boom Point To Ground
<b>100 foot (cont.)</b>	40	70.1	39400	100	<b>30.5 meters (cont.)</b>	12.2	70.1	17870	30.5
	50	63.9	29240	96		15.2	63.9	13260	29.3
	60	57.3	23060	90		18.3	57.3	10460	27.4
	70	50.2	18720	83		21.3	50.2	8490	25.3
	80	42.1	15580	73		24.4	42.1	7070	22.3
	90	32.5	13180	60		27.4	32.5	5980	18.3
	100	18.9	11310	38		30.5	18.9	5130	11.8
<b>110 foot</b>	20	82.7	106000	115	<b>33.5 meters</b>	6.1	82.7	48080	35.1
	25	80.0	75510	114		7.6	80.0	34250	34.7
	30	77.4	58060	113		9.1	77.4	26340	34.4
	35	74.7	47040	112		10.7	74.7	21340	34.1
	40	72.0	39220	111		12.2	72.0	17790	33.8
	50	66.4	29050	107		15.2	66.4	13180	32.6
	60	60.6	22880	102		18.3	60.6	10380	31.1
	70	54.4	18550	95		21.3	54.4	8410	29.0
	80	47.7	15390	87		24.4	47.7	6980	26.5
	90	40.1	13000	77		27.4	40.1	5900	23.5
	100	31.0	11130	62		30.5	31.0	5050	18.9
110	18.0	9520	40	33.5	18.0	4360	12.2		
<b>120 foot</b>	21	82.8	95520	125	<b>36.6 meters</b>	6.4	82.8	43330	38.1
	25	80.9	75360	125		7.6	80.9	34180	38.1
	30	78.5	57890	124		9.1	78.5	26260	37.8
	35	76.0	46880	123		10.7	76.0	21260	37.5
	40	73.5	39060	121		12.2	73.5	17720	36.9
	50	68.5	28880	118		15.2	68.5	13100	36.0
	60	63.3	22720	113		18.3	63.3	10310	34.4
	70	57.8	18380	107		21.3	57.8	8340	32.6
	80	51.9	15240	100		24.4	51.9	6910	30.5
	90	45.5	12840	91		27.4	45.5	5820	27.7
	100	38.3	10970	80		30.5	38.3	4980	24.4
	110	29.6	9450	65		33.5	29.6	4290	19.8
120	17.2	8220	41	36.6	17.2	3730	12.5		
<b>130 foot</b>	22	82.9	80970	135	<b>39.6 meters</b>	6.7	82.9	36730	41.1
	25	81.6	75200	135		7.6	81.6	34110	41.1
	30	79.4	57720	134		9.1	79.4	26180	40.8
	35	77.1	46710	133		10.7	77.1	21190	40.5
	40	74.8	38880	132		12.2	74.8	17640	40.2
	50	70.2	28680	128		15.2	70.2	13010	39.0
	60	65.5	22540	124		18.3	65.5	10220	37.8
	70	60.5	18200	119		21.3	60.5	8260	36.3
	80	55.3	15040	113		24.4	55.3	6820	34.4
	90	49.7	12650	105		27.4	49.7	5740	32.0
	100	43.6	10780	96		30.5	43.6	4890	29.3
	110	36.7	9260	83		33.5	36.7	4200	25.3
	120	28.4	8020	67		36.6	28.4	3640	20.4
130	16.5	6990	42	39.6	16.5	3170	12.8		
<b>140 foot</b>	24	82.6	68380	145	<b>42.7 meters</b>	7.3	82.6	31020	44.2
	25	82.2	68380	145		7.6	82.2	31020	44.2
	30	80.1	57550	144		9.1	80.1	26100	43.9
	35	78.0	46540	143		10.7	78.0	21110	43.6
	40	75.9	38700	142		12.2	75.9	17550	43.3
	50	71.7	28490	139		15.2	71.7	12920	42.4
	60	67.3	22360	135		18.3	67.3	10140	41.1
	70	62.8	18020	131		21.3	62.8	8170	39.9
	80	58.1	14870	125		24.4	58.1	6750	38.1
	90	53.1	12480	118		27.4	53.1	5660	36.0
	100	47.8	10590	110		30.5	47.8	4800	33.5
	110	41.9	9080	99		33.5	41.9	4120	30.2
	120	35.3	7830	87		36.6	35.3	3550	26.5
	130	27.3	6790	70		39.6	27.3	3080	21.3
140	15.9	5920	44	42.7	15.9	2690	13.4		
<b>150 foot</b>	25	82.7	58830	155	<b>45.7 meters</b>	7.6	82.7	26890	47.2
	30	80.8	57370	154		9.1	80.8	25020	46.9
	35	78.8	46370	153		10.7	78.8	21030	46.6
	40	76.9	38510	152		12.2	76.9	17470	46.3
	50	72.9	28290	149		15.2	72.9	12830	45.4
	60	68.9	22170	146		18.3	68.9	10060	44.5
	70	64.8	17830	142		21.3	64.8	8090	43.3
	80	60.4	14670	136		24.4	60.4	6650	41.5
	90	55.9	12270	130		27.4	55.9	5570	39.6
	100	51.2	10400	123		30.5	51.2	4720	37.5
	110	46.1	8870	114		33.5	46.1	4020	34.7
	120	40.4	7630	103		36.6	40.4	3480	31.4
	130	34.1	6590	90		39.6	34.1	2990	27.4
	140	26.3	5710	72		42.7	26.3	2590	21.9
	150	15.3	4960	45		45.7	15.3	2250	13.7

(Continued)



## LIFT RATINGS (cont.)

with 59S Tubular Chord Hammerhead Boom

### METRIC

Boom Length Feet	Radius In Feet	Boom Angle Degrees	Rating In Pounds	Feet From Boom Point To Ground
160 feet	26	82.8	49640	165
	30	81.4	49640	164
	35	79.6	46200	163
	40	77.7	38330	162
	50	74.0	28100	160
	60	70.3	22000	157
	70	66.4	17650	153
	80	62.5	14490	148
	90	58.3	12090	142
	100	54.0	10210	135
	110	49.4	8690	127
	120	44.5	7450	118
	130	39.1	6410	107
	140	32.9	5520	93
150	25.5	4770	74	
160	14.8	4120	46	
170 feet	27	82.9	43530	175
	30	81.9	43530	174
	35	80.2	43510	174
	40	78.5	38140	173
	50	75.0	27900	170
	60	71.5	21810	167
	70	67.9	17450	164
	80	64.2	14290	159
	90	60.4	11890	154
	100	56.4	10000	148
	110	52.3	8480	140
	120	47.9	7240	132
	130	43.1	6200	122
	140	37.9	5310	110
150	31.9	4560	96	
160	24.7	3900	77	
170	14.3	3340	48	
180 feet	28	83.0	38410	185
	30	82.3	38380	184
	35	80.7	38180	184
	40	79.1	37960	183
	50	75.9	27700	181
	60	72.5	21620	178
	70	69.2	17270	174
	80	65.7	14100	170
	90	62.2	11700	165
	100	58.5	9810	159
	110	54.7	8290	153
	120	50.7	7040	145
	130	46.4	5990	136
	140	41.8	5110	126
150	36.7	4350	113	
160	31.0	3690	98	
170	24.0	3120	79	
180	13.9	2520	49	

Boom Length Meters	Radius In Meters	Boom Angle Degrees	Rating In Kilograms	Meters From Boom Point To Ground
48.8 meters	7.9	82.8	22520	50.3
	9.1	81.4	22520	50.0
	10.7	79.6	20950	49.7
	12.2	77.7	17390	49.4
	15.2	74.0	12750	48.8
	18.3	70.3	9980	47.9
	21.3	66.4	8010	46.6
	24.4	62.5	6570	45.1
	27.4	58.3	5480	43.3
	30.5	54.0	4630	41.1
	33.5	49.4	3940	38.7
	36.6	44.5	3380	36.0
	39.6	39.1	2910	32.6
	42.7	32.9	2500	28.3
45.7	25.5	2180	22.6	
48.8	14.8	1870	14.0	
51.8 meters	8.2	82.9	19750	53.3
	9.1	81.9	19750	53.0
	10.7	80.2	19740	53.0
	12.2	78.5	17300	52.7
	15.2	75.0	12660	51.8
	18.3	71.5	9890	50.9
	21.3	67.9	7920	50.0
	24.4	64.2	6480	48.5
	27.4	60.4	5390	46.9
	30.5	56.4	4540	45.1
	33.5	52.3	3850	42.7
	36.6	47.9	3280	40.2
	39.6	43.1	2810	37.2
	42.7	37.9	2410	33.5
45.7	31.9	2070	29.3	
48.8	24.7	1770	23.5	
51.8	14.3	1520	14.6	
54.9 meters	8.5	83.0	17420	56.4
	9.1	82.3	17410	56.1
	10.7	80.7	17320	56.1
	12.2	79.1	17220	55.8
	15.2	75.9	12560	55.2
	18.3	72.5	9810	54.3
	21.3	69.2	7830	53.0
	24.4	65.7	6400	51.8
	27.4	62.2	5310	50.3
	30.5	58.5	4450	48.5
	33.5	54.7	3760	46.6
	36.6	50.7	3190	44.2
	39.6	46.4	2720	41.5
	42.7	41.8	2320	38.4
45.7	36.7	1970	34.4	
48.8	31.0	1670	29.9	
51.8	24.0	1420	24.1	
54.9	13.9	1140	14.9	

7260.97

## LIFT RATINGS

with 59S Tubular Chord Tapered Tip Boom and "S-S" Counterweight (49,900 lbs.) (22635 kgs.)

### METRIC

Boom Length Feet	Radius In Feet	Boom Angle Degrees	Rating In Pounds	Feet From Boom Point To Ground
60 feet	14	80.5	153340	65
	15	79.6	153340	64
	20	74.7	106870	63
	25	69.6	76530	62
	30	64.5	59270	59
	35	59.0	48260	57
	40	53.3	40520	53
	50	40.1	30460	44
	60	21.4	24240	27

Boom Length Meters	Radius In Meters	Boom Angle Degrees	Rating In Kilograms	Meters From Boom Point To Ground
18.3 meters	4.3	80.5	69580	19.8
	4.6	79.6	69580	19.5
	6.1	74.7	48480	19.2
	7.6	69.6	34710	18.9
	9.1	64.5	26880	18.0
	10.7	59.0	21890	17.4
	12.2	53.3	18380	16.2
	15.2	40.1	13820	13.4
	18.3	21.4	11000	8.2

(Continued)

**LIFT RATINGS (cont.)**

with 59S Tubular Chord Tapered Tip Boom

**METRIC**

Boom Length Feet	Radius In Feet	Boom Angle Degrees	Rating In Pounds	Feet From Boom Point To Ground
70 feet	16	80.2	153230	74
	20	76.9	106740	74
	25	72.6	76390	72
	30	68.3	59110	70
	35	63.8	48110	68
	40	59.2	40370	65
	50	49.1	30290	58
	60	37.0	24100	47
70	19.8	19800	29	
80 feet	17	80.7	139550	84
	20	78.6	106600	84
	25	74.9	78250	83
	30	71.1	58960	81
	35	67.3	47980	79
	40	63.4	40230	77
	50	55.0	30140	71
	60	45.7	23960	63
70	34.6	19660	51	
80	18.5	16550	31	
90 feet	19	80.5	115630	94
	20	79.8	106430	94
	25	76.6	76090	93
	30	73.3	58770	92
	35	69.9	47800	90
	40	66.5	40040	88
	50	59.4	29950	83
	60	51.6	23780	76
	70	43.0	19480	67
	80	32.5	16360	54
90	17.4	14000	32	
100 feet	20	80.9	106250	104
	25	78.0	75930	103
	30	75.0	58600	102
	35	72.0	47640	100
	40	69.0	39880	99
	50	62.7	29770	94
	60	56.0	23630	88
	70	48.8	19320	81
	80	40.6	16200	70
	90	30.8	13840	57
100	16.5	11990	34	
110 feet	22	80.6	91530	114
	25	79.1	75750	113
	30	76.4	58410	112
	35	73.7	47440	111
	40	71.0	39680	109
	50	65.4	29560	105
	60	59.5	23440	100
	70	53.2	19130	93
	80	46.4	16010	85
	90	38.7	13640	74
	100	29.4	11770	59
110	15.7	10290	35	
120 feet	23	81.0	85350	124
	25	80.0	75580	124
	30	77.5	58220	123
	35	75.1	47260	121
	40	72.6	39490	120
	50	67.5	29370	116
	60	62.2	23260	112
	70	56.7	18950	106
	80	50.8	15820	98
	90	44.3	13450	89
	100	37.0	11590	77
	110	28.1	10100	62
120	15.1	8890	37	
130 feet	25	80.8	74710	134
	30	78.5	58010	133
	35	76.3	47080	132
	40	74.0	39290	130
	50	69.3	29150	127
	60	64.5	23060	123
	70	59.6	18750	117
	80	54.3	15620	111
	90	48.7	13240	103

Boom Length Meters	Radius In Meters	Boom Angle Degrees	Rating In Kilograms	Meters From Boom Point To Ground
21.3 meters	4.9	80.2	69510	22.6
	6.1	76.9	48420	22.6
	7.6	72.6	34650	21.9
	9.1	68.3	26810	21.3
	10.7	63.8	21820	20.7
	12.2	59.2	18310	19.8
	15.2	49.1	13740	17.7
	18.3	37.0	10930	14.3
21.3	19.8	8980	8.8	
24.4 meters	5.2	80.7	63300	25.6
	6.1	78.6	48350	25.6
	7.6	74.9	34590	25.3
	9.1	71.1	26740	24.7
	10.7	67.3	21760	24.1
	12.2	63.4	18250	23.5
	15.2	55.0	13670	21.6
	18.3	45.7	10870	19.2
21.3	34.6	8920	15.5	
24.4	18.5	7610	9.4	
27.4 meters	5.8	80.5	52450	28.7
	6.1	79.8	48280	28.7
	7.6	76.6	34510	28.3
	9.1	73.3	26660	28.0
	10.7	69.9	21680	27.4
	12.2	66.5	18160	26.8
	15.2	59.4	13590	25.3
	18.3	51.6	10790	23.2
	21.3	43.0	8840	20.4
	24.4	32.5	7420	16.5
27.4	17.4	6350	9.8	
30.5 meters	6.1	80.9	48200	31.7
	7.6	78.0	34440	31.4
	9.1	75.0	26580	31.1
	10.7	72.0	21610	30.5
	12.2	69.0	18090	30.2
	15.2	62.7	13500	28.7
	18.3	56.0	10720	26.8
	21.3	48.8	8760	24.7
	24.4	40.6	7350	21.3
	27.4	30.8	6280	17.4
30.5	16.5	5440	10.4	
33.5 meters	6.7	80.6	41520	34.7
	7.6	79.1	34360	34.4
	9.1	76.4	26490	34.1
	10.7	73.7	21520	33.8
	12.2	71.0	18000	33.2
	15.2	65.4	13410	32.0
	18.3	59.5	10630	30.5
	21.3	53.2	8680	28.3
	24.4	46.4	7260	25.9
	27.4	38.7	6190	22.6
	30.5	29.4	5340	18.0
33.5	15.7	4670	10.7	
36.6 meters	7.0	81.0	38710	37.8
	7.6	80.0	34280	37.8
	9.1	77.5	26410	37.5
	10.7	75.1	21440	36.9
	12.2	72.6	17910	36.6
	15.2	67.5	13320	35.4
	18.3	62.2	10550	34.1
	21.3	56.7	8600	32.3
	24.4	50.8	7180	29.9
	27.4	44.3	6100	27.1
	30.5	37.0	5260	23.5
	33.5	28.1	4580	18.9
36.6	15.1	4030	11.3	
39.6 meters	7.6	80.8	33890	40.8
	9.1	78.5	26310	40.5
	10.7	76.3	21360	40.2
	12.2	74.0	17820	39.6
	15.2	69.3	13220	38.7
	18.3	64.5	10460	37.5
	21.3	59.6	8510	35.7
	24.4	54.3	7090	33.8
	27.4	48.7	6010	31.4

(Continued)

**LIFT RATINGS (cont.)**

with 59S Tubular Chord Tapered Tip Boom

**METRIC**

Boom Length Feet	Radius In Feet	Boom Angle Degrees	Rating In Pounds	Feet From Boom Point To Ground
130 feet (cont.)	100	42.5	11380	93
	110	35.5	9880	81
	120	27.0	8660	64
	130	14.5	7640	38
140 feet	27	80.6	64400	143
	30	79.3	57820	143
	35	77.3	46890	142
	40	75.2	39100	141
	50	70.9	28960	138
	60	66.5	22880	134
	70	61.9	18570	129
	80	57.2	15440	123
	90	52.2	13060	116
	100	46.8	11190	107
	110	40.9	9690	97
	120	34.1	8470	84
130	26.0	7440	67	
140	13.9	6590	39	
150 feet	28	80.8	55770	153
	30	80.1	55770	153
	35	78.1	46690	152
	40	76.2	38890	151
	50	72.2	28740	148
	60	68.1	22680	145
	70	63.9	18360	140
	80	59.6	15220	135
	90	55.1	12850	128
	100	50.3	10980	121
	110	45.1	9490	112
	120	39.4	8250	101
130	32.9	7220	87	
140	25.1	6360	69	
150	13.5	5630	40	
160 feet	30	80.7	47450	163
	35	78.9	46500	162
	40	77.0	38700	161
	50	73.3	28540	159
	60	69.6	22490	155
	70	65.7	18160	151
	80	61.7	15030	146
	90	57.5	12650	140
	100	53.2	10790	133
	110	48.6	9280	125
	120	43.6	8050	116
	130	38.1	7020	104
140	31.9	6150	90	
150	24.3	5410	71	
160	13.0	4780	41	
170 feet	31	80.9	41890	173
	35	79.5	41820	173
	40	77.8	38490	172
	50	74.3	28320	169
	60	70.8	22280	166
	70	67.2	17950	162
	80	63.5	14820	157
	90	59.7	12440	152
	100	55.7	10570	146
	110	51.5	9070	138
	120	47.0	7830	130
	130	42.2	6800	120
140	36.9	5920	107	
150	30.9	5180	93	
160	23.5	4540	73	
170	12.6	3990	43	
180 feet	33	80.8	37010	183
	35	80.1	36880	183
	40	78.5	36730	182
	50	75.2	22120	179
	60	71.9	22090	176
	70	68.5	17760	173
	80	65.1	14820	169
	90	61.5	12240	164
	100	57.8	10370	158
	110	54.0	8860	151
	120	49.9	7630	143
	130	45.6	6600	134

Boom Length Meters	Radius In Meters	Boom Angle Degrees	Rating In Kilograms	Meters From Boom Point To Ground
39.6 meters (cont.)	30.5	42.5	5160	28.3
	33.5	35.5	4480	24.7
	36.6	27.0	3930	19.5
	39.6	14.5	3470	11.6
42.7 meters	8.2	80.6	29210	43.6
	9.1	79.3	26230	43.6
	10.7	77.3	21270	43.3
	12.2	75.2	17740	43.0
	15.2	70.9	13140	42.1
	18.3	66.5	10380	40.8
	21.3	61.9	8420	39.3
	24.4	57.2	7000	37.5
	27.4	52.2	5920	35.4
	30.5	46.8	5080	32.6
	33.5	40.9	4400	29.8
	36.6	34.1	3840	25.8
39.6	26.0	3370	20.4	
42.7	13.9	2990	11.9	
45.7 meters	8.5	80.8	25300	46.6
	9.1	80.1	25300	46.6
	10.7	78.1	21180	46.3
	12.2	76.2	17640	46.0
	15.2	72.2	13040	45.1
	18.3	68.1	10290	44.2
	21.3	63.9	8330	42.7
	24.4	59.6	6900	41.1
	27.4	55.1	5830	39.0
	30.5	50.3	4980	36.9
	33.5	45.1	4300	34.1
	36.6	39.4	3740	30.8
39.6	32.9	3270	26.5	
42.7	25.1	2880	21.0	
45.7	13.5	2550	12.2	
48.8 meters	9.1	80.7	21520	49.7
	10.7	78.9	21090	49.4
	12.2	77.0	17550	49.1
	15.2	73.3	12950	48.5
	18.3	69.6	10200	47.2
	21.3	65.7	8240	46.0
	24.4	61.7	6820	44.5
	27.4	57.5	5740	42.7
	30.5	53.2	4890	40.5
	33.5	48.6	4210	38.1
	36.6	43.6	3650	35.4
	39.6	38.1	3180	31.7
42.7	31.9	2790	27.4	
45.7	24.3	2450	21.6	
48.8	13.0	2170	12.5	
51.8 meters	9.4	80.9	19000	52.7
	10.7	79.5	18970	52.7
	12.2	77.8	17460	52.4
	15.2	74.3	12850	51.5
	18.3	70.8	10110	50.6
	21.3	67.2	8140	49.4
	24.4	63.5	6720	47.9
	27.4	59.7	5640	46.3
	30.5	55.7	4790	44.5
	33.5	51.5	4110	42.1
	36.6	47.0	3550	39.6
	39.6	42.2	3080	36.6
42.7	36.9	2690	32.6	
45.7	30.9	2350	28.3	
48.8	23.5	2060	22.3	
51.8	12.6	1810	13.1	
54.9 meters	10.1	80.8	16790	55.8
	10.7	80.1	16730	55.8
	12.2	78.5	16660	55.5
	15.2	75.2	10030	54.6
	18.3	71.9	10020	53.6
	21.3	68.5	8060	52.7
	24.4	65.1	6630	51.5
	27.4	61.5	5550	50.0
	30.5	57.8	4700	48.2
	33.5	54.0	4020	46.0
	36.6	49.9	3460	43.6
	39.6	45.6	2990	40.8

(Continued)



## LIFT RATINGS (cont.)

with 59S Tubular Chord Tapered Tip Boom

### METRIC

Boom Length Feet	Radius In Feet	Boom Angle Degrees	Rating In Pounds	Feet From Boom Point To Ground
180 feet (cont.)	140	41.0	5730	123
	150	35.9	4970	111
	160	30.0	4330	95
	170	22.8	3760	75
	180	12.3	3290	44
190 feet	34	81.0	32880	193
	35	80.6	32820	193
	40	79.1	32490	192
	50	76.0	27900	190
	60	72.9	21890	187
	70	69.7	17550	184
	80	66.5	14410	180
	90	63.1	12030	175
	100	59.7	10160	169
	110	56.1	8650	163
	120	52.4	7420	156
	130	48.5	6380	148
	140	44.3	5500	138
	150	39.8	4750	127
160	34.9	4100	114	
170	29.2	3530	98	
180	22.2	3050	77	
190	12.0	2560	45	
200 feet	36	80.8	29310	203
	40	79.7	28990	202
	50	76.7	27680	200
	60	73.8	21690	197
	70	70.8	17350	194
	80	67.7	14210	190
	90	64.6	11820	186
	100	61.4	9950	181
	110	58.0	8440	175
	120	54.6	7200	168
	130	51.0	6170	161
	140	47.2	5290	152
	150	43.2	4540	142
	160	38.8	3880	131
170	34.0	3320	117	
180	28.4	2800	101	
190	21.7	2280	79	
200	11.7	1820	46	

7260.96

Boom Length Meters	Radius In Meters	Boom Angle Degrees	Rating In Kilograms	Meters From Boom Point To Ground
54.9 meters (cont.)	42.7	41.0	2600	37.5
	45.7	35.9	2250	33.8
	48.8	30.0	1960	29.0
	51.8	22.8	1710	22.9
	54.9	12.3	1490	13.4
57.9 meters	10.4	81.0	14910	58.8
	10.7	80.6	14890	58.8
	12.2	79.1	14740	58.5
	15.2	76.0	12660	57.9
	18.3	72.9	9930	57.0
	21.3	69.7	7960	56.1
	24.4	66.5	6540	54.9
	27.4	63.1	5480	53.3
	30.5	59.7	4610	51.5
	33.5	56.1	3920	49.7
	36.6	52.4	3370	47.5
	39.6	48.5	2890	45.1
	42.7	44.3	2490	42.1
	45.7	39.8	2150	38.7
48.8	34.9	1850	34.7	
51.8	29.2	1600	29.9	
54.9	22.2	1380	23.5	
57.9	12.0	1160	13.7	
61.0 meters	11.0	80.8	13300	61.9
	12.2	79.7	13150	61.6
	15.2	76.7	12560	61.0
	18.3	73.8	9840	60.0
	21.3	70.8	7870	59.1
	24.4	67.7	6450	57.9
	27.4	64.6	5360	56.7
	30.5	61.4	4510	55.2
	33.5	58.0	3830	53.3
	36.6	54.6	3270	51.2
	39.6	51.0	2800	49.1
	42.7	47.2	2400	46.3
	45.7	43.2	2060	43.3
	48.8	38.8	1760	39.9
51.8	34.0	1510	35.7	
54.9	28.4	1270	30.8	
57.9	21.7	1030	24.1	
61.0	11.7	830	14.0	

## DUTY CYCLE RATINGS with 59S Tubular Chord Tapered Tip Boom and "L-L" Counterweight (25,000 lbs.) (11340 kgs.)

### METRIC

Boom Length (Feet)	Radius In Feet	Boom Angle Degrees	Duty Cycle Ratings			Feet From Boom Point To Ground
			Clamshell	Dragline	Magnet	
60 feet	14	80.5	20700	17750	20700	65
	15	79.6	20700	17750	20700	64
	20	74.7	20700	17750	20700	63
	25	69.6	20700	17750	20700	62
	30	64.5	20700	17750	20700	59
	35	59.0	20700	17750	20700	57
	40	53.3	20700	17750	20700	53
70 feet	50	40.1	19620	17750	19620	44
	60	21.4	15440	17340	15440	27
	16	80.2	20700	17750	20700	74
	20	76.9	20700	17750	20700	74
	25	72.6	20700	17750	20700	72
	30	68.3	20700	17750	20700	70
	35	63.8	20700	17750	20700	68
70 feet	40	59.2	20700	17750	20700	65
	50	49.1	19530	17750	19530	58
	60	37.0	15360	17250	15360	47
	70	19.8	12500	14030	12500	29

Boom Length (Meters)	Radius In Meters	Boom Angle Degrees	Duty Cycle Ratings			Meters From Boom Point To Ground
			Clamshell	Dragline	Magnet	
18.3 meters	4.3	80.5	9390	8050	9390	19.8
	4.6	79.6	9390	8050	9390	19.5
	6.1	74.7	9390	8050	9390	19.2
	7.6	69.6	9390	8050	9390	18.9
	9.1	64.5	9390	8050	9390	18.0
	10.7	59.0	9390	8050	9390	17.4
	12.2	53.3	9390	8050	9390	16.2
21.3 meters	15.2	40.1	8900	8050	8900	13.4
	18.3	21.4	7000	7670	7000	8.2
	4.9	80.2	9390	8050	9390	22.6
	6.1	76.9	9390	8050	9390	22.6
	7.6	72.6	9390	8050	9390	21.9
	9.1	68.3	9390	8050	9390	21.3
	10.7	63.8	9390	8050	9390	20.7
21.3 meters	12.2	59.2	9390	8050	9390	19.8
	15.2	49.1	8860	8050	8860	17.7
	18.3	37.0	6970	7620	6970	14.3
	21.3	19.8	5670	6360	5670	8.8

**DUTY CYCLE RATINGS (cont.)**

with 59S Tubular Chord Tapered Tip Boom

**METRIC**

Boom Length (Feet)	Radius In Feet	Boom Angle Degrees	Duty Cycle Ratings			Feet From Boom Point To Ground	Boom Length (Meters)	Radius In Meters	Boom Angle Degrees	Duty Cycle Ratings			Meters From Boom Point To Ground
			Clamshell	Dragline	Magnet					Clamshell	Dragline	Magnet	
80 feet	17	80.7	20700	17750	20700	84	24.4 meters	5.2	80.7	9390	8050	9390	25.6
	20	78.6	20700	17750	20700	84		6.1	78.6	9390	8050	9390	25.6
	25	74.9	20700	17750	20700	83		7.6	74.9	9390	8050	9390	25.3
	30	71.1	20700	17750	20700	81		9.1	71.1	9390	8050	9390	24.7
	35	67.3	20700	17750	20700	79		10.7	67.3	9390	8050	9390	24.1
	40	63.4	20700	17750	20700	77		12.2	63.4	9390	8050	9390	23.5
	50	55.0	19420	17750	19420	71		15.2	55.0	8810	8050	8810	21.6
	60	45.7	15250	17130	15250	63		18.3	45.7	6920	7770	6920	19.2
	70	34.6	12390	13920	12390	51		21.3	34.6	5620	6310	5620	15.5
80	18.5	10300	11570	10300	31	24.4	18.5	4670	5250	4670	9.4		
90 feet	19	80.5	20700	—	—	94	27.4 meters	5.8	80.5	9390	—	—	28.7
	20	79.8	20700	—	—	94		6.1	79.8	9390	—	—	28.7
	25	76.6	20700	—	—	93		7.6	76.6	9390	—	—	28.3
	30	73.3	20700	—	—	92		9.1	73.3	9390	—	—	28.0
	35	69.9	20700	—	—	90		10.7	69.9	9390	—	—	27.4
	40	66.5	20700	—	—	88		12.2	66.5	9390	—	—	26.8
	50	59.4	19300	—	—	83		15.2	59.4	8750	—	—	25.3
	60	51.6	15130	—	—	76		18.3	51.6	6860	—	—	23.2
	70	43.0	12270	—	—	67		21.3	43.0	5570	—	—	20.4
80	32.5	10190	—	—	54	24.4	32.5	4620	—	—	16.5		
90	17.4	8590	—	—	32	27.4	17.4	3900	—	—	9.8		
100 feet	20	80.9	20700	—	—	104	30.5 meters	6.1	80.9	9390	—	—	31.7
	25	78.0	20700	—	—	103		7.6	78.0	9390	—	—	31.4
	30	75.0	20700	—	—	102		9.1	75.0	9390	—	—	31.1
	35	72.0	20700	—	—	100		10.7	72.0	9390	—	—	30.5
	40	69.0	20700	—	—	99		12.2	69.0	9390	—	—	30.2
	50	62.7	19190	—	—	94		15.2	62.7	8700	—	—	28.7
	60	56.0	15010	—	—	88		18.3	56.0	6810	—	—	26.8
	70	48.8	12160	—	—	81		21.3	48.8	5520	—	—	24.7
	80	40.6	10080	—	—	70		24.4	40.6	4570	—	—	21.3
90	30.8	8490	—	—	57	27.4	30.8	3850	—	—	17.4		
100	16.5	7240	—	—	34	30.5	16.5	3280	—	—	10.4		
110 feet	22	80.6	20700	—	—	114	33.5 meters	6.7	80.6	9390	—	—	34.7
	25	79.1	20700	—	—	113		7.6	79.1	9390	—	—	34.4
	30	76.4	20700	—	—	112		9.1	76.4	9390	—	—	34.1
	35	73.7	20700	—	—	111		10.7	73.7	9390	—	—	33.8
	40	71.0	20700	—	—	109		12.2	71.0	9390	—	—	33.2
	50	65.4	19050	—	—	105		15.2	65.4	8640	—	—	32.0
	60	59.5	14880	—	—	100		18.3	59.5	6750	—	—	30.5
	70	53.2	12020	—	—	93		21.3	53.2	5450	—	—	28.3
	80	46.4	9940	—	—	85		24.4	46.4	4510	—	—	25.9
90	38.7	8360	—	—	74	27.4	38.7	3790	—	—	22.6		
100	29.4	7110	—	—	59	30.5	29.4	3230	—	—	18.0		
110	15.7	6090	—	—	35	33.5	15.7	2760	—	—	10.7		
120 feet	23	81.0	20700	—	—	124	36.6 meters	7.0	81.0	9390	—	—	37.8
	25	80.0	20700	—	—	124		7.6	80.0	9390	—	—	37.8
	30	77.5	20700	—	—	123		9.1	77.5	9390	—	—	37.5
	35	75.1	20700	—	—	121		10.7	75.1	9390	—	—	36.9
	40	72.6	20700	—	—	120		12.2	72.6	9390	—	—	36.6
	50	67.5	18910	—	—	116		15.2	67.5	8580	—	—	35.4
	60	62.2	14730	—	—	112		18.3	62.2	6680	—	—	34.1
	70	56.7	11870	—	—	106		21.3	56.7	5380	—	—	32.3
	80	50.8	9800	—	—	98		24.4	50.8	4450	—	—	29.9
90	44.3	8210	—	—	89	27.4	44.3	3720	—	—	27.1		
100	37.0	6970	—	—	77	30.5	37.0	3160	—	—	23.5		
110	28.1	5950	—	—	62	33.5	28.1	2700	—	—	18.9		
120	15.1	5110	—	—	37	36.6	15.1	2320	—	—	11.3		

7260.81

**NOTE:**

Maximum dragline ratings are increased to 19,500 pounds (8845 kilograms) and maximum clamshell and magnet ratings are increased to 22,750 pounds (10319 kilograms) with optional GM 84-71N on Cummins NT-855-C250 diesel engine with three stage torque converter.



## CRANE RATING DATA

Load ratings are in pounds (**kilograms**) and do not exceed 75% of the load which would cause tipping with crane standing level on firm uniformly supporting surface. Safe loads depend on ground conditions, boom length, radius of operation, and proper handling, all of which must be taken into consideration by user.

Lifting is approved only in those areas for which ratings are shown in the rating chart.

"Radius in feet (**meters**)" is the horizontal distance at crane base level from center pin to vertical line through the center of gravity of the suspended load. Blocks, slings, buckets, and other load carrying devices are considered part of the load. Retractable A-frame must be in fully raised position for all ratings.

Ratings in shaded areas are based on structural limitations rather than stability.

Main load line is 1" (25.4 mm) dia. IPS with a minimum breaking strength of 89,800 pounds (40733 kilograms). Boom suspension rope is 10 parts .75" (19 mm) dia. EIPS with a minimum breaking strength of 58,800 pounds (26672 kilograms). Boom suspension pendants are 2 parts of 1.375" (34.9 mm) dia. with a minimum breaking strength of 208,000 pounds (94349 kilograms).

Designed and rated to comply with ANSI Code B30.5.

## LOAD HOISTING DATA

### METRIC

Maximum Lifting Capacity	Minimum Parts of Load Line	Maximum Hoisting Distance		
		RH Drum With Controlled Lead Lowering	LH Drum With Controlled Lead Lowering	LH Drum Without Controlled Lead Lowering
		ft.	ft.	ft.
200000	8	72	45	55
179600	7	83	52	63
153940	6	96	60	73
128280	5	116	72	88
102630	4	145	91	110
76970	3	193	121	147
51310	2	290	162	221
25660	1	581	364	442

Based on 1 in. IPS load line with 89,800 lbs. minimum breaking strength.

Maximum Lifting Capacity	Minimum Parts of Load Line	Maximum Hoisting Distance		
		RH Drum With Controlled Lead Lowering	LH Drum With Controlled Lead Lowering	LH Drum Without Controlled Lead Lowering
		m	m	m
90720	8	21.9	13.7	16.8
81470	7	25.3	15.8	19.2
68830	6	29.3	18.3	22.3
58180	5	35.4	21.9	26.9
46550	4	44.2	27.7	33.5
34910	3	58.8	36.9	44.8
23270	2	88.4	55.5	67.4
11640	1	177.1	110.9	134.7

Based on 25.4 mm dia. load line with 40733 kgs. minimum breaking strength.

## BOOM AND JIB ERECTION

### METRIC

Boom Length	Max. SHL Jib Length
180' (54.9 m) Hammerhead	70'
200' (61.0 m) Tapered Tip	80'

Boom Length	Max. SHL Jib Length
180' (54.9 m) Hammerhead	21.3 m
200' (61.0 m) Tapered Tip	24.4 m

Boom & jib erection is over the end of the machine with idler tumbler blocked and with "SS" counterweight.

## 59S HAMMERHEAD BOOM COMPOSITION

## 59S TAPERED TIP BOOM COMPOSITION

Boom Length		20 Ft. (6.1 m) 59H Inner	10 Ft. (3.1 m) 59S Center	20 Ft. (6.1 m) 59S Center	40 Ft. (12.2 m) 59S Center	20 Ft. (6.1 m) 59SH Outer Base	Hammerhead
Ft.	m						
40	12.2	1	—	—	—	1	1
50	15.3	1	1	—	—	1	1
60	18.3	1	—	1	—	1	1
70	21.3	1	1	1	—	1	1
80	24.4	1	—	—	1	1	1
90	27.9	1	1	—	1	1	1
100	30.5	1	—	1	1	1	1
110	33.5	1	1	1	1	1	1
120	36.6	1	—	—	2	1	1
130	39.6	1	1	—	2	1	1
140	42.7	1	—	1	2	1	1
150	45.7	1	1	1	2	1	1
160	48.8	1	—	—	3	1	1
170	51.8	1	1	—	3	1	1
180	54.9	1	—	1	3	1	1
190	57.9	1	—	1	3	1	1
200	61.0	1	—	1	3	1	1

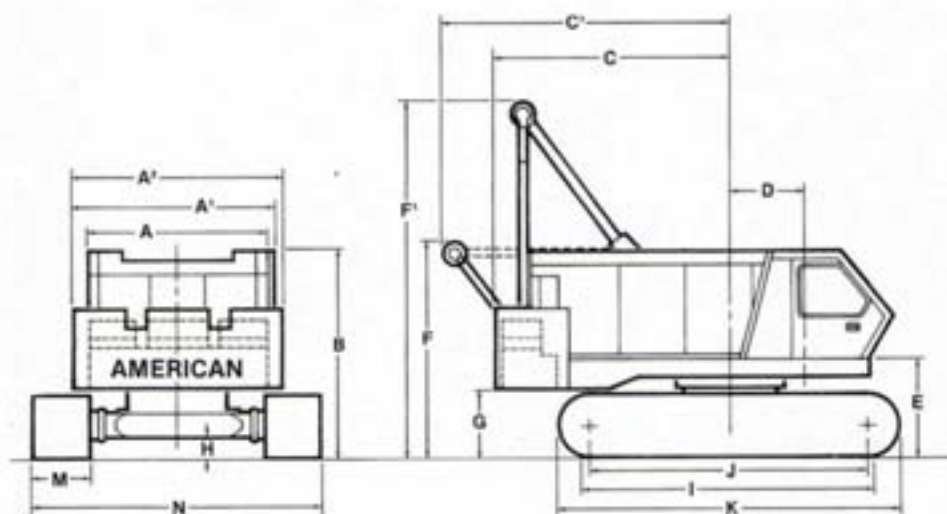
Boom Length		20 Ft. (6.1 m) 59H Inner	10 Ft. (3.1 m) 59S Center	20 Ft. (6.1 m) 59S Center	40 Ft. (12.2 m) 59S Center	20 Ft. (6.1 m) 59SH Outer Base	20 Ft. (6.1 m) 59SH Tapered Tip
Ft.	m						
60	18.3	1	—	—	—	1	1
70	21.3	1	1	—	—	1	1
80	24.4	1	—	1	—	1	1
90	27.4	1	1	1	—	1	1
100	30.5	1	—	—	1	1	1
110	33.5	1	1	—	1	1	1
120	36.6	1	—	1	1	1	1
130	39.6	1	1	1	1	1	1
140	42.7	1	—	—	2	1	1
150	45.7	1	1	—	2	1	1
160	48.8	1	—	1	2	1	1
170	51.8	1	1	1	2	1	1
180	54.9	1	—	—	3	1	1
190	57.9	1	1	—	3	1	1
200	61.0	1	—	1	3	1	1

J.S.A.





## AMERICAN MODEL 7260 CRAWLER



### GENERAL DIMENSIONS

	FL	MM		FL	MM		
A	Width of cab	10'6"	3200	I	Crawler bearing length	17'2 1/2"	5245
A <sup>1</sup>	Width over counterweight	11'11 1/2"	3645	J	Center to center crawler tumbler	16'4"	4978
A <sup>2</sup>	Width of machinery cab plus operator cab	10'11"	3327	K	Overall length to crawlers	19'6 1/2"	5956
B	Height over cab	11'9"	3581	M	Width of tread shoes (Standard)	38"	991
C	Tailswing	14'9"	4496	M'	Width of tread shoes (Optional)	44" or 50"	1117 or 1270
C'	Tailswing with A-frame retracted	16'9 1/2"	5118				
D	Center of pivot to center of crane boom foot	4'1 1/2"	1257	N	Overall width over crawlers		
E	Ground to center of crane boom foot	5'6"	1676		38" (.965 m) Shoes	16'8"	5080
F	Height over A-frame in retracted position	12'2"	3708		44" (1.118 m) Shoes	17'2"	5232
F'	Height over A-frame in raised position	20'7"	6274		50" (1.270 m) Shoes	17'8"	5385
G	Ground to bottom of counterweight	3'11"	1194	N'	Width with side frames removed (over crawler axles)	11'0"	3353
H	Minimum ground clearance under crawler base	14"	4267	O	Overall length of cab and counterweight	19'8"	5994

### PERFORMANCE

TRAVEL SPEED.....0.9 MPH 1.45 KPH

SWING SPEED.....3 RPM 3 RPM

#### SINGLE LINE SPEED:

Crane Hoist.....165 FPM 50.3 MPM

Dragline.....157 FPM 47.9 MPM

Magnet.....200 FPM 61.0 MPM

Third Drum (Standard Travel).....185 FPM 56.4 MPM

Third Drum (Independent Travel).....115 FPM 35.0 MPM

#### SINGLE LINE PULL:

Crane Hoist.....29,500 lbs. SLP 13381 kg

Dragline.....31,400 lbs. SLP 14240 kg

Magnet.....24,400 lbs. SLP 11068 kg

Third Drum (Std. Travel).....10,000 lbs. SLP 4536 kg

Third Drum (Ind. Travel).....16,000 lbs. SLP 7258 kg

**NOTE:** In accordance with varying material situations and the Company's policy of constant product improvement these specifications are subject to change without notice and without incurring responsibility to units previously sold.

### WEIGHTS

7260 lifting crane with "S-S" counterweight and 40 ft. (12.19m) boom with hammerhead:

38" (965 mm) shoes	44" (1117 mm) shoes	50" (1270 mm) shoes
167,900 #	170,050 #	172,650 #
76,159 kg	77,135 kg	78,314 kg

	LBS.	KG.
Counterweight	49,900	22635
Hammerhead tip	2,150	975
Crane boom outer	1,060	481
Crane boom inner	2,230	1011
Boom stops	350	160
Outer bail assy.	965	440
Crawler side frames (38" 965 mm shoes)	46,740	21200
Drive couplings	840	380
Crawler axles	7,900	3580
Carbody assy.	11,120	5040

### GROUND PRESSURES

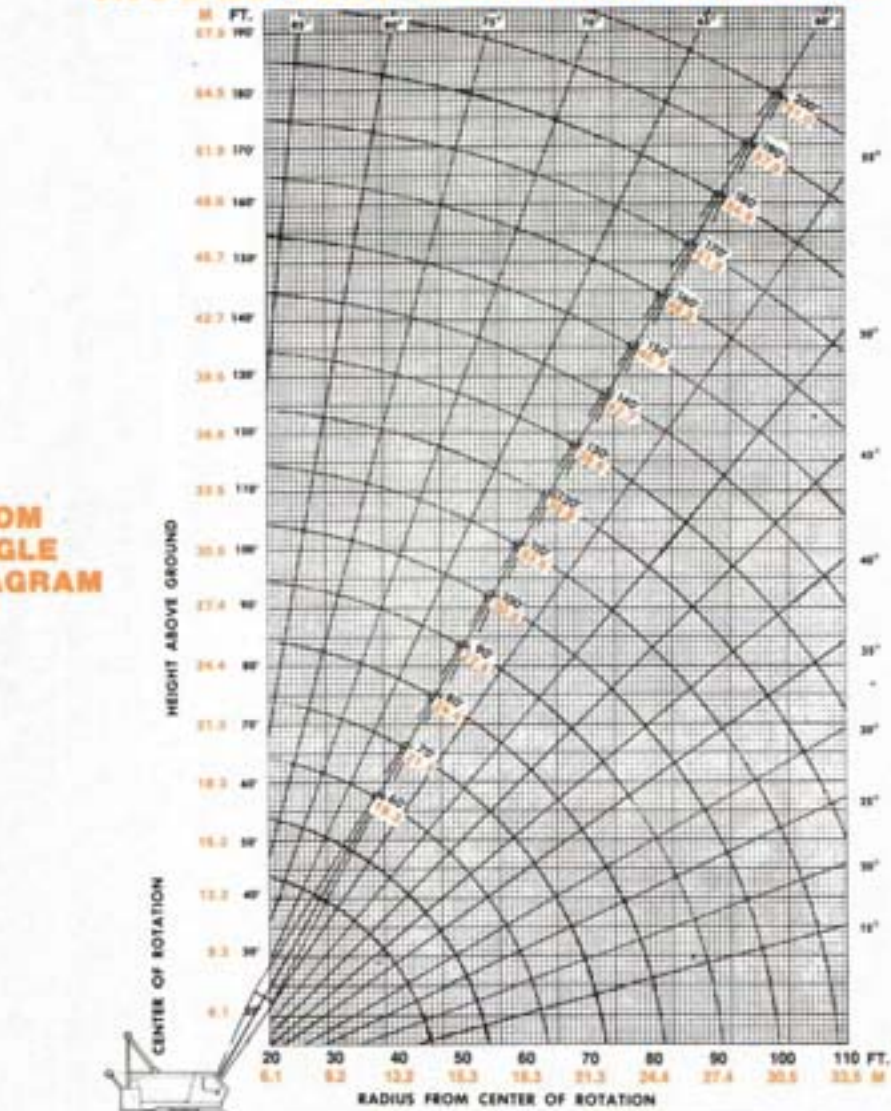
Lifting crane with 40 ft. (12.19m) boom with hammerhead and "S-S" counterweight.

38" (965 mm) shoes	44" (1117 mm) shoes	50" (1270 mm) shoes
10.7 PSI	9.4 PSI	8.4 PSI



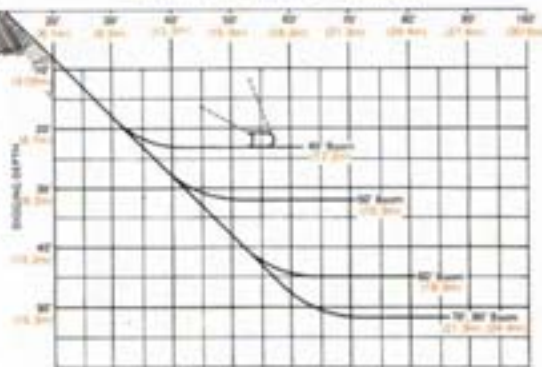
# MODEL 7260 WORKING RANGES

## BOOM ANGLE DIAGRAM



## DRAGLINE DIGGING DEPTH

The Casting Radius will exceed Dumping Radius by 1/4 to 1/2 the dumping height of the bucket, depending on the skill of the operator.



3JR891

7260-CR-6

PRINTED IN U.S.A.

SOLD & SERVICED BY:



The American Crane Corporation  
 202 Raleigh Street  
 Wilmington, North Carolina 28403  
 AN EQUAL OPPORTUNITY EMPLOYER